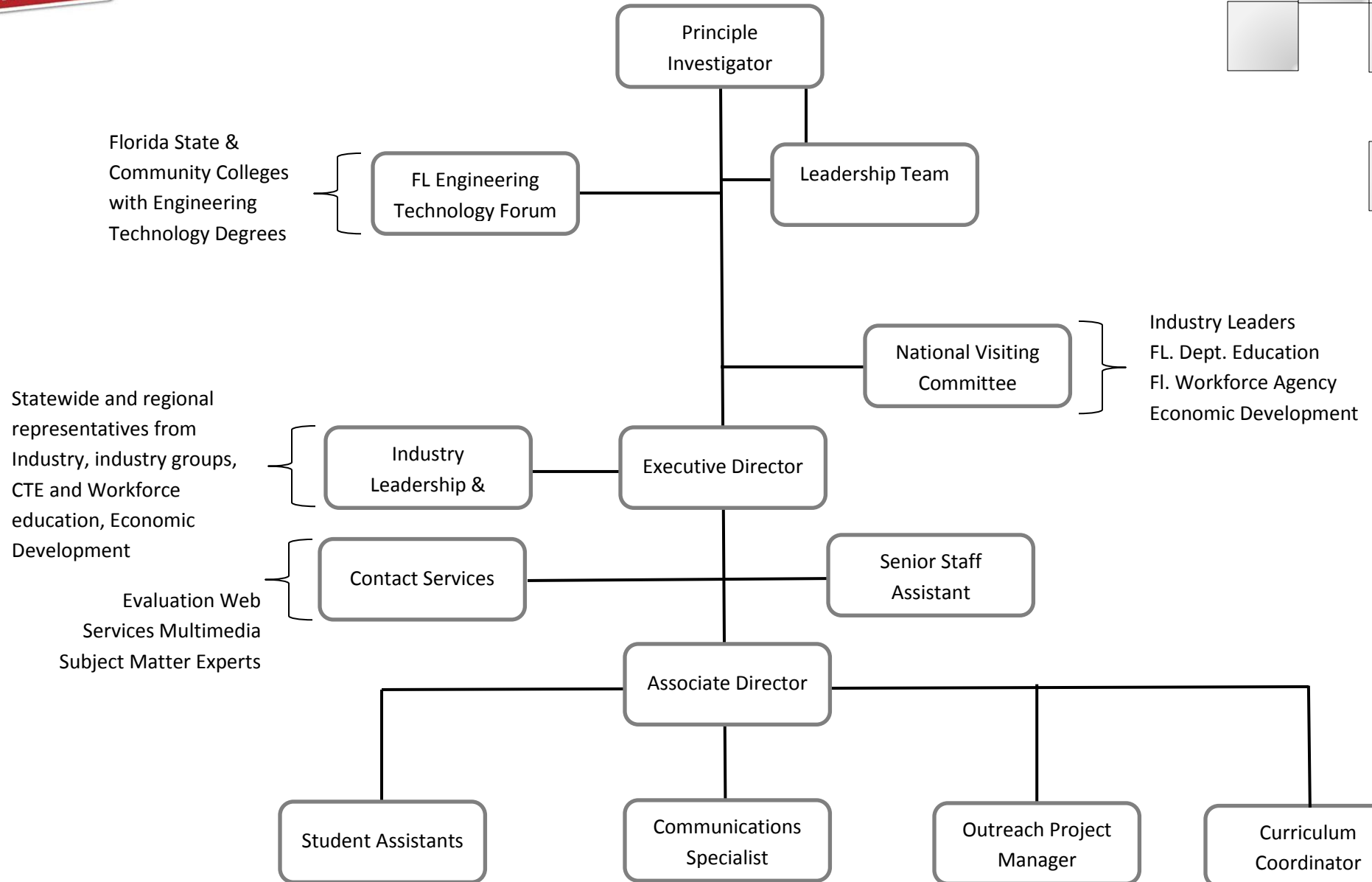


# Organizational Chart



<b><i>Executive Director</i></b>	Dr. Barger (P.I.) - Proactive contributor and coordinator of leadership team's efforts to; drive FLATE's vision, mission, and goals; scale up collaborations with other NSF-ATE centers nationwide; spearhead career preparation outreach, curriculum reform, and professional development initiatives
<b><i>National Visiting Committee (NVC)</i></b>	Provides advocacy, advice, and consent for FLATE policies and directions. Reports directly to FLATE's NSF-ATE Program Officer.
<b><i>FLATE Leadership Team (LT)</i></b>	M. Barger, HCC; M. Lesiecki, <i>Maricopa Community College</i> ; R. Gilbert, <i>USF College of Engineering</i> ; Phil Centonze, Center Evaluator; Terry Iverson, NVC Chair. <b>LT</b> members meet monthly; set implementation directions; interface with stakeholders and partners; maintain quest for FLATE's vision
<b><i>IL&amp;AT and ET Forum Colleagues</i></b>	The <b>IL&amp;TA (Industry Leadership &amp; Advisory Team)</b> consists of professional organization, industry, and stakeholder groups. The ET Forum Colleagues contains ET program directors. Both meet regularly and define FLATE priorities
<b><i>Associate Director</i></b>	Danielly Orozco-provides data collection, method and analysis coordination. Guides professional development and outreach actions to enhance effectiveness
<b><i>Communication Specialist</i></b>	Dana Achatz - responsible for FLATE's newsletter, social and press media, photography, graphics, event coverage, and ATE Central dissemination and archiving
<b><i>Curriculum Coordinator</i></b>	Jesse Kokotek - responsible for developing and maintaining curriculum and educational resources
<b><i>Outreach Manager</i></b>	Janice Mukhia - support college and industry teams; organize/manage/track outreach activities
<b><i>Senior Staff Assistant</i></b>	Susan Begley - supports budget, travel, meetings (staff, NVC, IAC), time reports, purchasing, etc.
<b><i>Outside Grant Evaluator</i></b>	Phil Centonze - facilitates evaluation plan's integration with NSF requirements
<b><i>Contract Personnel</i></b>	Outreach, web, multi-media, graphics, curriculum development/production